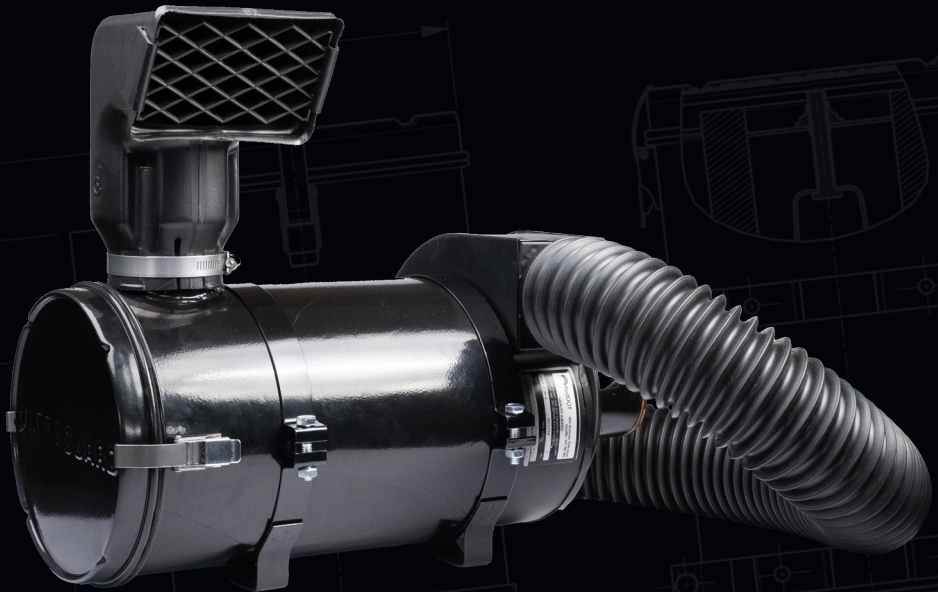




EXTERNAL UNITS

External units for any vehicle



PROTECTED BY **ADXORB[®]**

Ultrasafe has developed the UGM and Ultraguard External Filter Units that can be fitted to any vehicle with a cabin, to provide the operator with clean air while spraying or to protect from dust.

Previously only those operators in air-conditioned tractors could replace the dust filter with a detoxifying tractor cab chemical filter and enjoy clean air, now anyone using a vehicle with a cab has the same opportunity

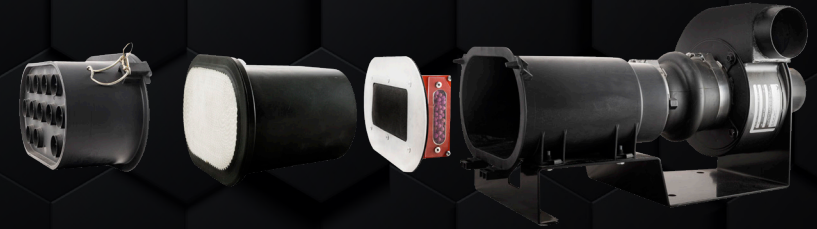
ADXORB[®]

With over 30 years of experience in chemical air filtration, we use our very own ADXORB Carbon in all external systems.

Independent lab testing has proven ADXORB to perform up to 11x better than any other filter.

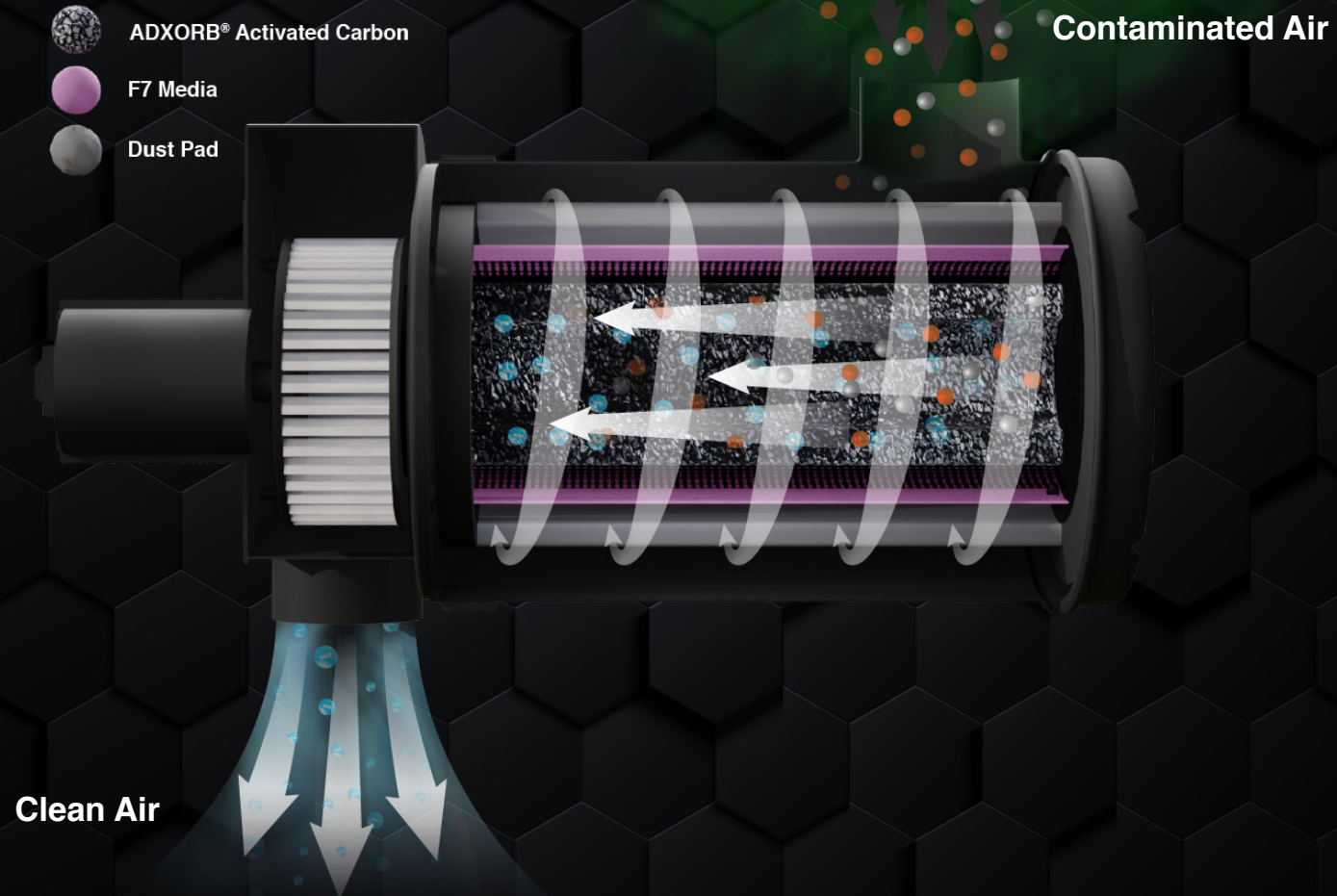


Ideal for chemicals, with a tough steel housing supporting Ultrasafe's leading carbon filter with our ADXORB Activated Carbon. Our flagship model, used on all systems from small ATV's to Self-Propelled sprayers.



Our range of UGM units supply the purest air in dusty conditions. Each unit houses a large dust filter and a secondary chemical filter. The UGM range offers versatility and performance, available in three sizes and multiple mounting options.



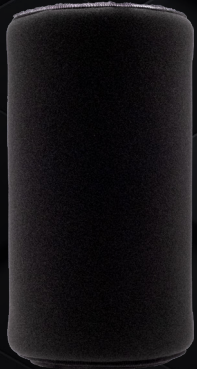


The Ultraguard Unit is made from a robust steel housing which incases an Ultrasafe Products Detoxifying chemical filter. The sturdy housing ensures the filter is protected from the elements and saturation. Air enters through the dust pad and onto the carbon bed, removing the dust increases the efficiency of the carbon. From here, the air flows through the carbon bed where chemicals are removed. The clean air is then drawn through the inbuilt fan and passes through to the cab via a ducting hose.

The hose can be attached to the cab body or through the window. This unit is suited to most applications and can be easily fixed to any cab or cabin. Dimensions and flow rates can be found below. The fan draws air in through the protective housing and through the chemical filter system.

Carbon Filter

ADXORB[®]



Our very own carbon filter with ADXORB Carbon. Express recharge service available to save money.

HEPA Filter



High Efficiency Particulate Filter for the removal of dust, pollen, mold and bacteria.

Dust Filter



Ideal for dusty conditions, perfect replacement for your carbon filter outside of spraying season.

PRODUCT	AIRFLOW	AIRFLOW	LENGTH (mm)	HEIGHT (mm)	DEPTH (mm)	WEIGHT (kg)
UGM09	25-30LITRES/ MINUTE WITH CARBON AND DUST FILTER	25-30 LITRES/ MINUTE WITH DUST FILTER	715	290	280	11.55
UGM10	35-45LITRES/ MINUTE WITH CARBON AND DUST FILTER	80-95 LITRES/ MINUTE WITH DUST FILTER	745	335	390	13.6
UGM12	40-50LITRES/ MINUTE WITH CARBON AND DUST FILTER	85-100 LITRES/ MINUTE WITH DUST FILTER	800	380	430	16.1
ULTRAGUARD+	45-50LITRES/ MINUTE WITH CARBON	70-80 LITRES/ MINUTE WITH DUST FILTER	630	410	260	10.15
*ALL UNITS						

Fitting Instructions

1. Mount the two body bands on the vehicle in an appropriate position, allowing the filter to be changed. Space the bands so that one is against the closed air outlet and the other is against the band securing the lid of the body.
2. Thread the CPA through the hose. Attach one end of the hose to the PVC air outlet on the steel body with a hose clamp.
3. Place the filter in the body over the spindle and tighten the wingnut firmly. Replace the end cap with the grid.

For Direct plumbing into the cab:

- Cut an aperture in the cab which will allow airflow into the cab but not blow directly onto the operator if possible.
- Place the flange where the inlet is to be and mark around the inside opening to give the cutting size. Ensure that there are no wires or obstructions in the way.
- Drill into one spot on the drawn circle and use a jigsaw to cut around the marked hole. Place the flange over the hole and drill four holes through the flange and the cab skin.
- Pop rivet into place and silicone the joining edges.
- Thread the CPA and wire through the hole and clamp the hose in place on the flange.

Ultrasafe

08 8531 9222

www.ultrasafe.com